

CONCRETE POLICY REFORM: PROPOSALS FROM GROUND UP

Presented at

Online National Workshop on
Labour Migration: Issues and Way
Forward

15th September, 2020



3 KINDS OF EXCLUSIONS FACED BY
MIGRANT WORKERS



1
IDENTITY



2
ELIGIBILITY



3
LOCATION

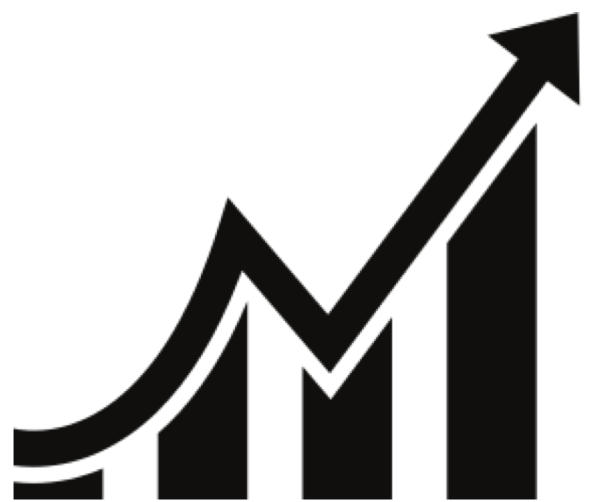
OBJECTIVES



Pave the way for inter-state dialogue on migration.



Provide workers access to rights as equal citizens of the country.



Integrate employment policy of migrants with overall development strategy of the State.



Attach dignity to their work.



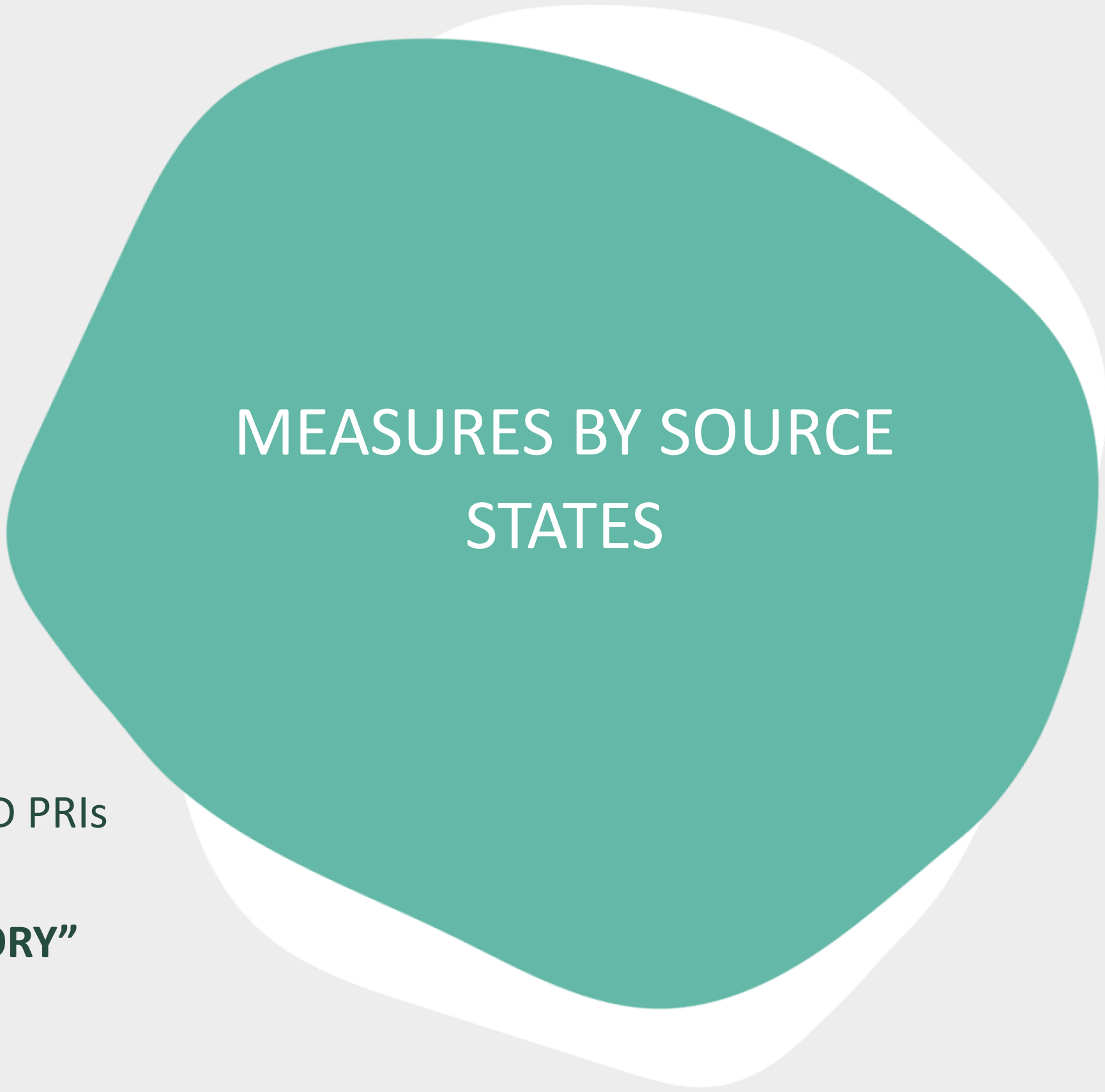
CREATE ACCESS TO
EMPLOYMENT
OPPORTUNITIES



SKILL BUILDING

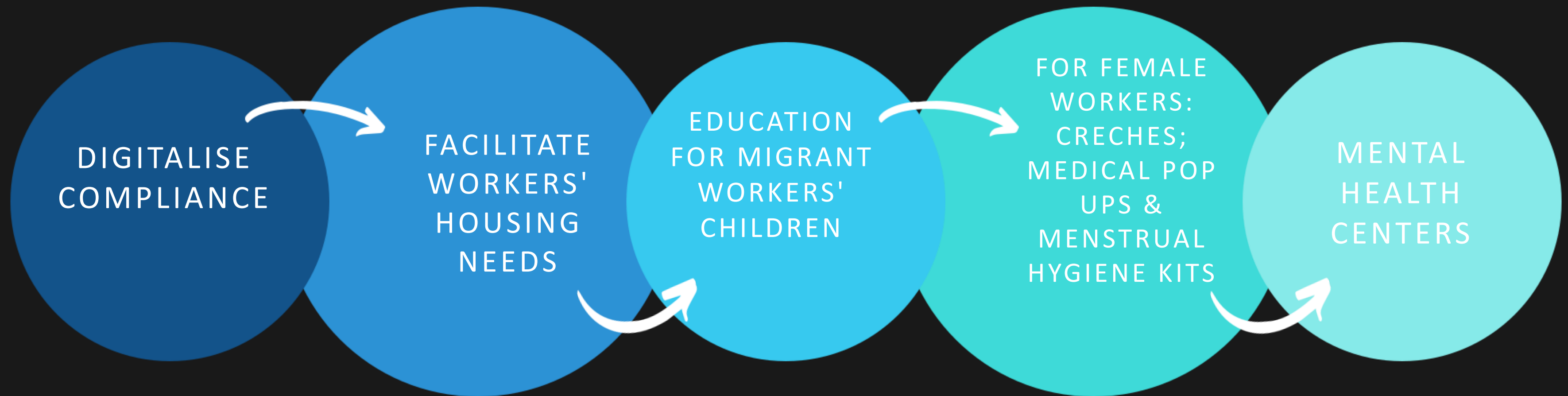


COORDINATION WITH LOCAL BODIES AND PRIs
–RECORD DATA ON A NATIONAL PORTAL
“NATIONAL RURAL MIGRANTS’ INVENTORY”
(NARMI)



MEASURES BY SOURCE STATES

MEASURES BY DESTINATION STATES



EXISTING ACTS AND PROVISIONS FOR MIGRANTS

NATIONAL FOOD SECURITY ACT,
2013



RIGHT TO EDUCATION 2009

SEXUAL HARRASSMENT OF
WOMEN AT WORKPLACE ACT
2013

IMPLEMENTATION OF INTER-
STATE MIGRANT WORKMEN
(REGULATION OF EMPLOYMENT
AND CONDITIONS OF SERVICE
ACT) 1979

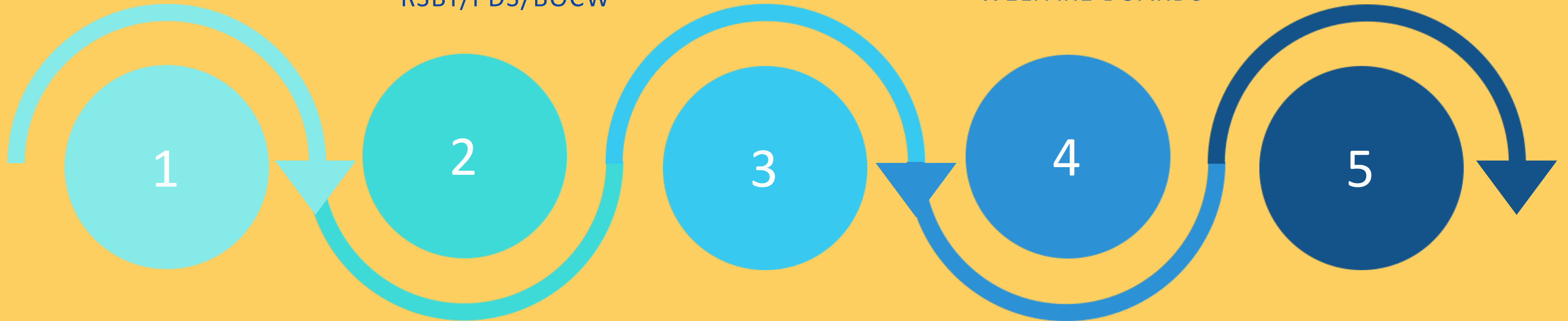
BUILDING AND OTHER
CONSTRUCTION WORKERS ACT
1996

QUICK ACTION AREAS



PORTABILITY OF
SCHEMES -
RSBY/PDS/BOCW

MONITORING
COMPLIANCES BY
WELFARE BOARDS

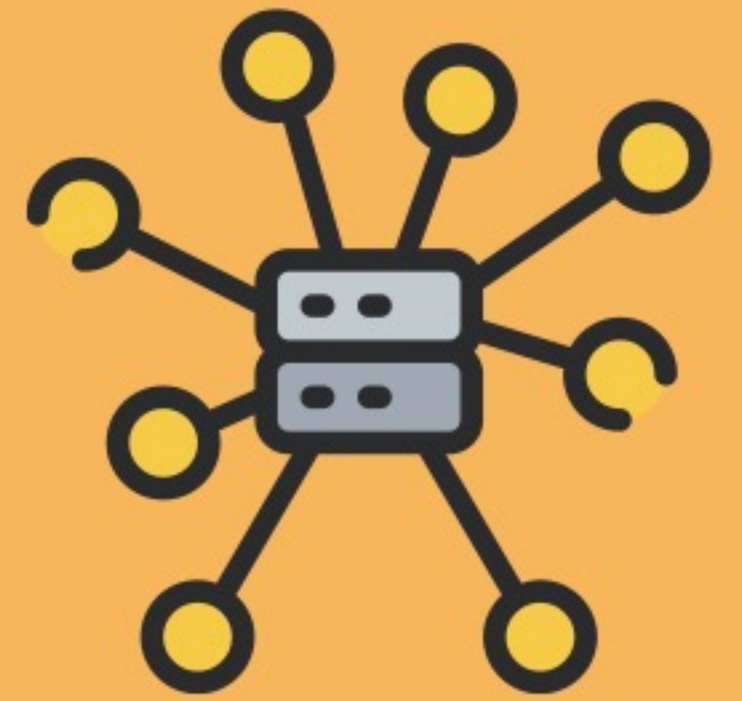


DIGITAL
CONVERGENCE

MIGRANT RESOURCE SUPPORT
CENTERS

SKILL
CERTIFICATION AND
UPGRADATION

DATA CONVERGENCE



BENEFITS:

**REGISTRATION OF MIGRANTS
BEING DONE AT SEVERAL
PORTALS; (SKILL MAPPING
THROUGH ASEEM PORTAL BY
CENTRAL GOVT;
RETURNEE MIGRANTS BY
STATE GOVERNMENT;
CONSTRUCTION WORKERS BY
BOCW AND STATE WELFARE
BOARD.**

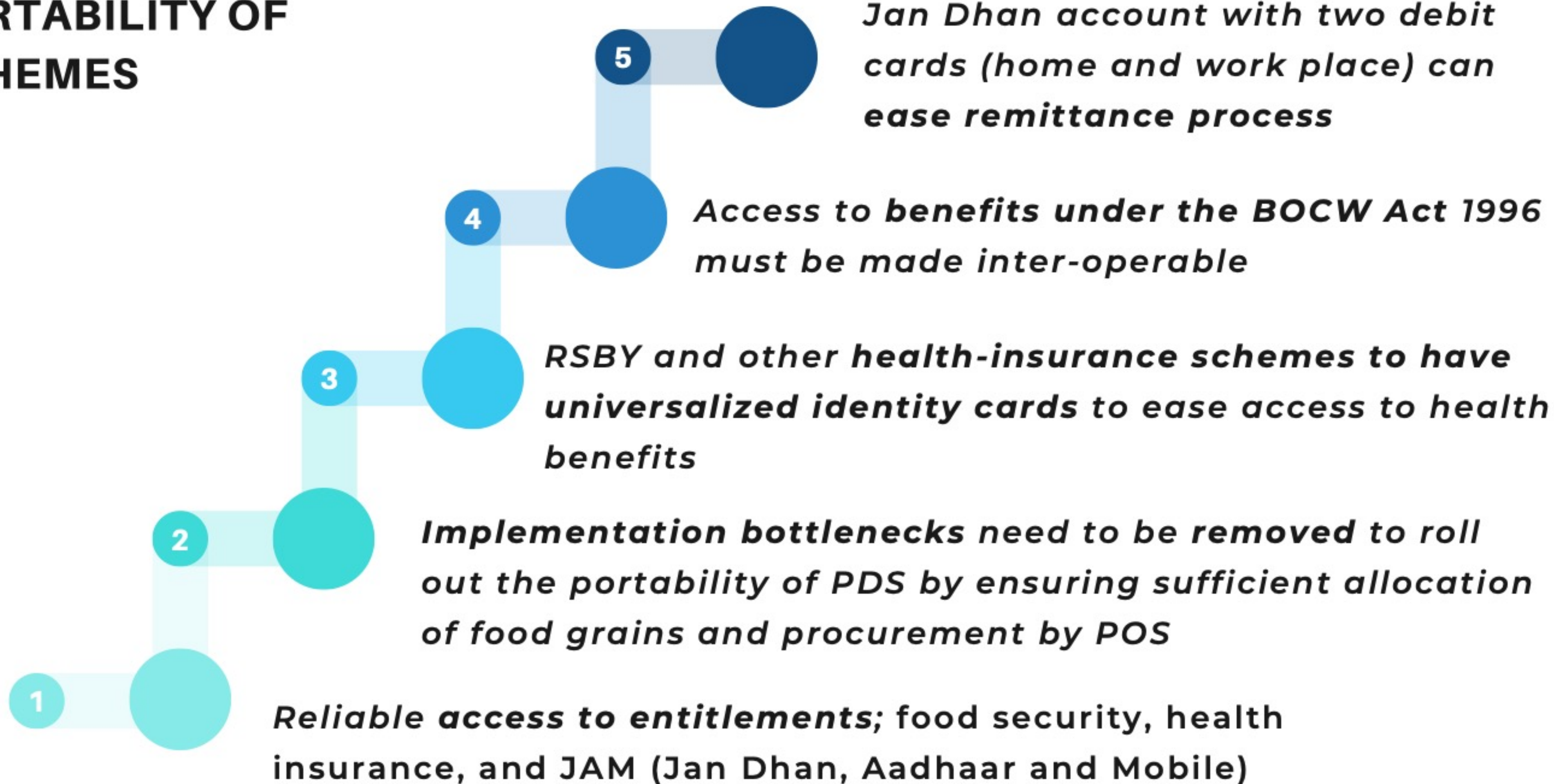
**WHILE REGISTRATION AND
DATA COLLECTION SHOULD BE
DONE IN A DECENTRALIZED
MANNER, THE CONVERGENCE
NEEDS TO BE CENTRALIZED
TO AVOID DUPLICATION AND
REDUCE COSTS**

**COMPREHENSIVE
CENTRALIZED DATABASE OF
MIGRATION-RELATED
INFORMATION**

**ENABLE ACCESS TO
WELFARE SCHEMES**

**TRACK MIGRATION TRENDS
EFFICIENTLY**

PORTABILITY OF SCHEMES



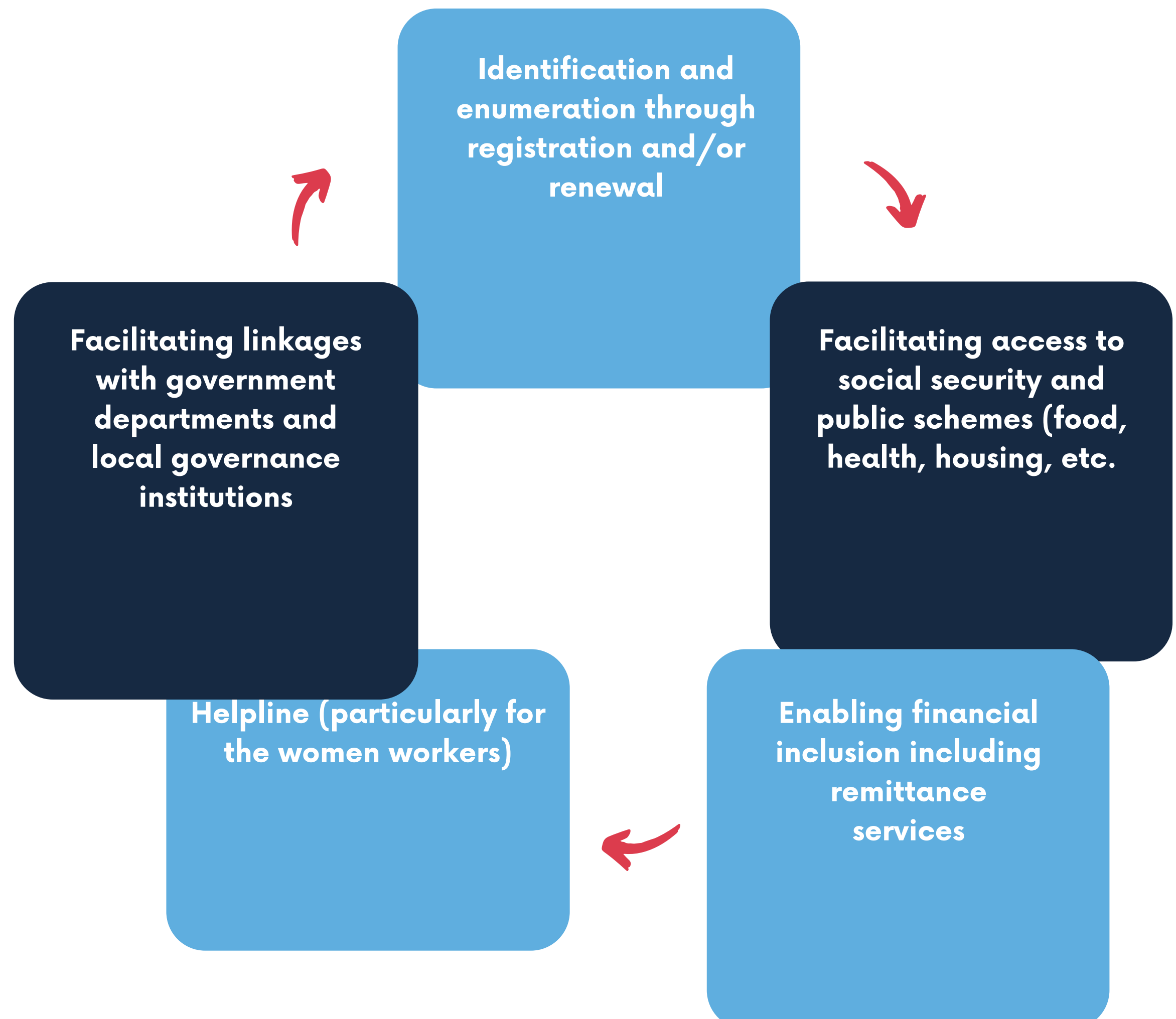
MIGRANT SUPPORT RESOURCE CENTRE



A Migrant Support Resource Centre (MSRC) is a common service point for the migrants both at the source and destination locations

The cess collected as contribution from the employers, contractors, and employees under the BOCW Act, 1996 can be deployed towards setting MSRCs

BENEFITS



MONITORING COMPLIANCE BY WELFARE BOARDS



Independent mechanism should be in place for monitoring implementation of labour rights under various Acts.

Facilitate access to time-bound grievance redressal mechanism

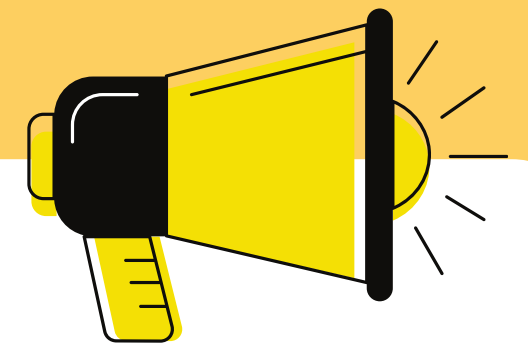
SKILL CERTIFICATION AND UPGRADATION



Context specific,
competence-based
Recognition of Prior
Learning (RPL)
mechanism



Conduct training of
trainers for sensitizing
the resource persons
and facilitators to the
contextual reality of
the learners



Increase funding for
outreach of skill
development centres
including RPL at the
block, city and district
level

Dr. Rajesh Tandon

@RTandon_PRIA
@UNESCOchairCBR/

Email: rajesh.tandon@pria.org

Websites

www.unescochair-cbrsr.org

www.pria.org

www.marthafarrellfoundation.org



Knowledge. Voice. Democracy.

PRIA